

3334/3355/6 Screwdriver set, stainless and rack, 6 pieces

Series Kraftform Screwdrivers Stainless Steel



EAN:	4013288111395	Size:	285x210x55 mm
Part number:	05032061001	Weight:	658 g
Article number:	3334/3355/6	Country of origin:	CZ
		Customs tariff number:	82054000

- Stainless screwdriver for slotted and cross-recess screws, Pozidriv
- Multi-component Kraftform handle for fast and ergonomic screwdriving
- Take it easy tool finder: colour coding according to profile and size
- Hexagonal anti-roll feature against rolling away
- Lasertip tip, stainless to prevent extraneous rust

High quality Kraftform Plus screwdriver set out of stainless steel. The stainless tools from Wera are vacuum ice-hardened and have the hardness and strength needed for screw connections. They can be used for industrial application without hesitation. The Lasertip tip literally bites into the head of the screw and thereby prevents any slipping out of the screw head. Multi-component Kraftform handle for fast and low-fatigue working. Take it easy tool finder with colour coding according to profiles and size stamp - for simple and rapid accessing of the required tool. The hexagonal anti-roll feature prevents any bothersome rolling away at the workplace. Includes a practical rack for tidy storage of the screwdrivers.

Web link

https://products.wera.de/en/screwdrivers_series_kraftform_screwdrivers_stainless_steel_3334_3355_6.html

Wera - 3334/3355/6
05032061001 - 4013288111395

Wera Werkzeuge GmbH
Korzerter Straße 21-25
D-42349 Wuppertal
Tel: +49 (0)2 02 / 40 45-0
E-Mail: info@wera.de

Screw stainless steel together with stainless steel!



Screw stainless steel together with stainless steel!



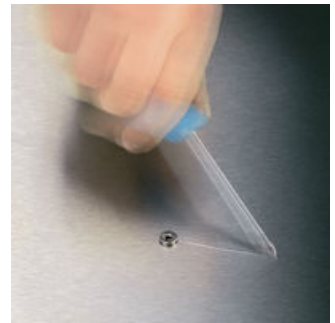
Solution to the rust problem: screwdriving stainless steel together with stainless steel! Wera stainless steel tools are manufactured out of stainless steel so unsightly rust can be avoided.

Vacuum ice-hardened



The stainless steel tools from Wera are vacuum ice-hardened and have the hardness and strength needed for screw connections. There are no limitations to the industrial applications they are suitable for.

Lasertip prevents slipping out



It happens time and time again that the tip slips out of the screw head when screwdriving, sometimes damaging valuable surfaces or even causing injury. The tips of the Wera Lasertip screwdrivers are microscopically roughened by means of a laser. This rough surface literally "bites" itself firmly into the screw head. Slipping out becomes a thing of the past.

Web link

https://products.wera.de/en/screwdrivers_series_kraftform_screwdrivers_stainless_steel_3334_3355_6.html

Wera - 3334/3355/6
05032061001 - 4013288111395

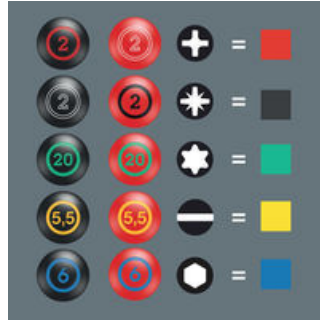
Wera Werkzeuge GmbH
Korzerter Straße 21-25
D-42349 Wuppertal
Tel: +49 (0)2 02 / 40 45-0
E-Mail: info@wera.de

Lasertip



A precisely-focused laser creates a sharp-edged surface structure. Wera Lasertip "bites" itself into the screw head and prevents any slips out of the recess. It is available for screwdrivers for slotted, Phillips and Pozidriv screws.

Take it easy Tool Finder



Screwdrivers with Take it easy tool finder: colour coding according to profile and size stamp.

Kraftform



The basic idea for the prototype of the Kraftform handle - that the hand should dictate the design - has, right through to today, proved to be correct. In cooperation with the internationally recognised Fraunhofer IAO Institute, Wera developed a screwdriver handle designed to match the shape of the human hand as long ago as the 1960s. After a long development phase, the Wera Kraftform handle was launched to the market in 1968. It has been optimised through the years with new technologies, but has kept its proven shape. After all, the human hand has not changed either.

Prevents hand injuries



The outstanding design of the Kraftform handle that fits perfectly into the hand prevents hand injuries such as blisters and calluses.

Web link

https://products.wera.de/en/screwdrivers_series_kraftform_screwdrivers_stainless_steel_3334_3355_6.html

Wera - 3334/3355/6
05032061001 - 4013288111395

Wera Werkzeuge GmbH
Korzerter Straße 21-25
D-42349 Wuppertal
Tel: +49 (0)2 02 / 40 45-0
E-Mail: info@wera.de

3334/3355/6 Screwdriver set, stainless and rack, 6 pieces

Series Kraftform Screwdrivers Stainless Steel



Set contents:

3355 PZ Screwdriver for Pozidriv screws, stainless, PZ 1 x 80 mm



05032031001	1x	PZ 1 x 80 mm
05032032001	1x	PZ 2 x 100 mm

3335 Screwdriver for slotted screws, stainless, 0.5 x 3 x 80 mm



05032001001 ¹⁾	1x	0.5 x 3 x 80 mm
05032003001	1x	0.8 x 4 x 100 mm
05032004001 ¹⁾	1x	1 x 5.5 x 125 mm

1) without Lasertip

3334 Screwdriver for slotted screws, stainless, 1.2 x 6.5 x 150 mm



05032005001	1x	1.2 x 6.5 x 150 mm
-------------	----	--------------------

Web link

https://products.wera.de/en/screwdrivers_series_kraftform_screwdrivers_stainless_steel_3334_3355_6.html

Wera - 3334/3355/6
05032061001 - 4013288111395

Wera Werkzeuge GmbH
Korzerter Straße 21-25
D-42349 Wuppertal
Tel: +49 (0)2 02 / 40 45-0
E-Mail: info@wera.de