

Humidity + Temperature Chart Recorder

Best value graphical datalogger in the market

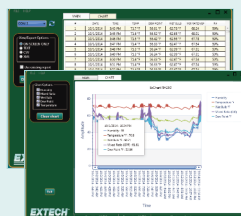
User friendly, easy to set up and operate

Features:

- Simultaneous numerical and graphical display of Humidity and Temperature readings, plus Time and Date
- Measures Humidity (10 to 95%RH) and Temperature (-20.0°F to 140.0°F) plus included LabVIEW™-based software calculates and graphs Dew Point, Wet Bulb, and GPP (grains per pound)
- Large dual graphical LCD displays with adjustable vertical and horizontal TAC resolution
- Internal memory records up to 49,000 data points and can be transferred to a PC via RS-232 serial port for further data analysis
- LCD indicates percentage of memory remaining
- Replaceable probe does not require recalibration
- Detachable probe extends up to 1 meter for measurements in closed environments
- Audible and visual alarm with Hi/Low setpoints
- Output socket used with optional external alarm module
- Scroll the cursor to display selected data recorded
- Desk or wall mount
- Complete with built-in stand, detachable probe with 3ft (1m) cable, RS232 cable, RS-232 To USB Adaptor, PC software, 100-240VAC 50/60Hz adaptor, and 3 AA batteries

Applications:

- Monitor and record Laboratory or clean Room temperature and humidity history
- Record process conditions
- Generate warning when conditions are outside required limits
- Monitor controlled environment areas such as freezers, storage areas and other critical areas
- Store humidity and temperature historical data for report generation



PC based software with proprietary cable (included) for data download, or view on screen with scrollable and expandable chart



Wall mounted for storage and easy viewing of Temperature and Humidity trends with date/time stamp



Desk mount configuration with easy to program swivel arm control panel plus probe with remote cable for reaching into ducts and humidity chambers

Specifications

| | |
|-------------------------|------------------------------------|
| Relative Humidity Range | 10.0 to 95.0% |
| Temperature Range | -20.0 to 140.0°F (-28.0 to 60.0°C) |
| Accuracy | ±3% Relative Humidity; ±1.8°F/±1°C |
| Dimensions | 5 x 7.7 x 0.9" (129x195x22mm) |
| Weight | 12.6oz (357g) |